







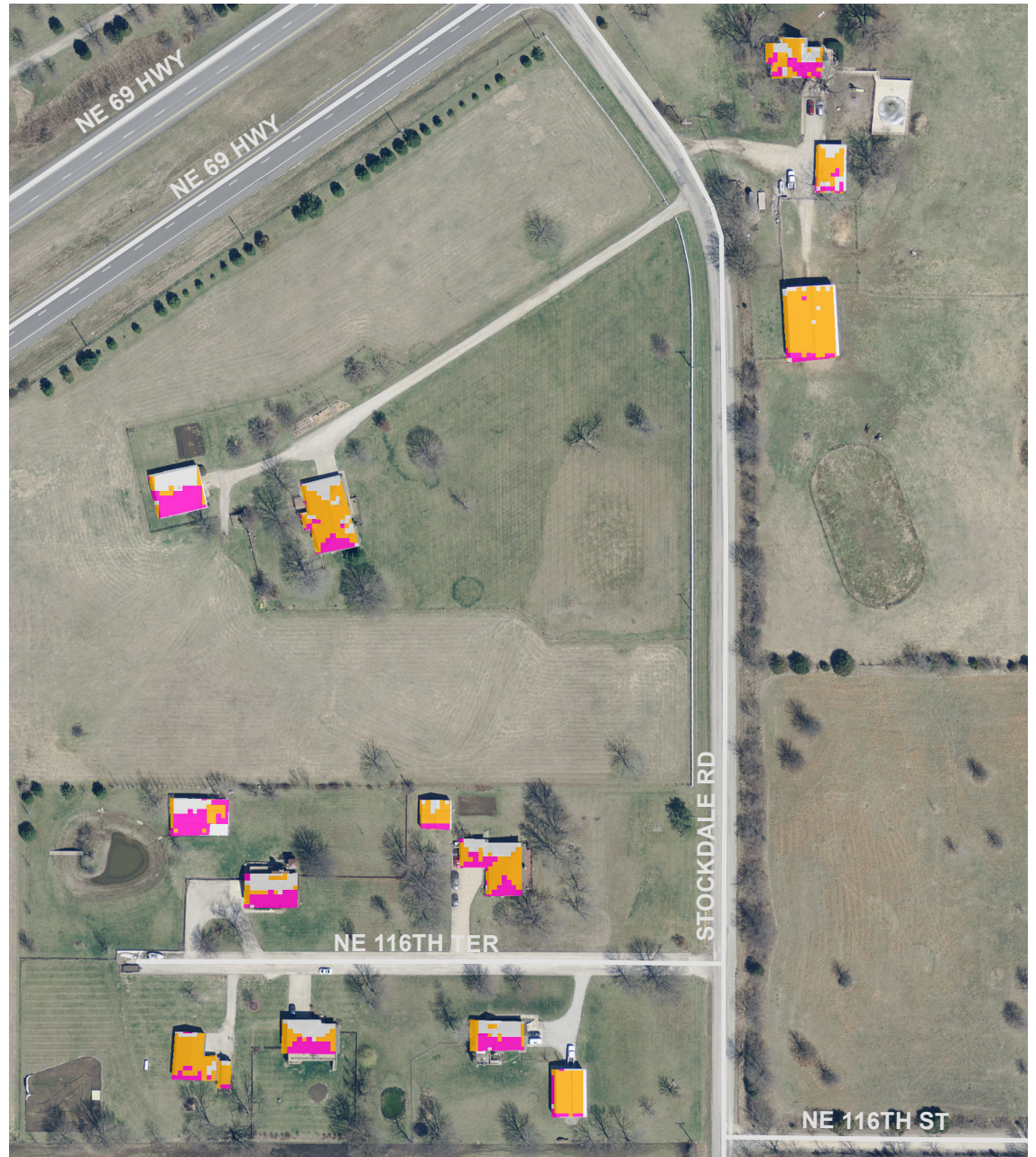
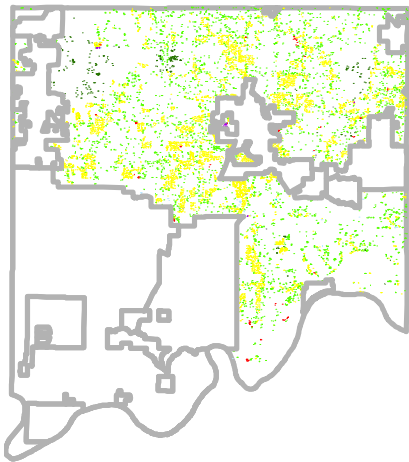
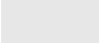



Clay County Solar Potential

	Land Use	Available Roof Area	Potential Installed Capacity	Potential Electricity Cost Savings
	Agriculture or Vacant	4,116,423 sq ft	41,164 kW	\$5,155,299
	Commercial	184,166 sq ft	1,842 kW	\$230,645
	Industrial	115,783 sq ft	1,158 kW	\$145,003
	Office	4,109 sq ft	41 kW	\$5,146
	Parks, Open Space	268,380 sq ft	2,684 kW	\$336,112
	Public/Semipublic	128,410 sq ft	1,284 kW	\$160,818
	Residential	5,639,898 sq ft	56,399 kW	\$7,063,258
	Unclassified	22,043 sq ft	220 kW	\$27,606



-  North
-  East/West
-  South