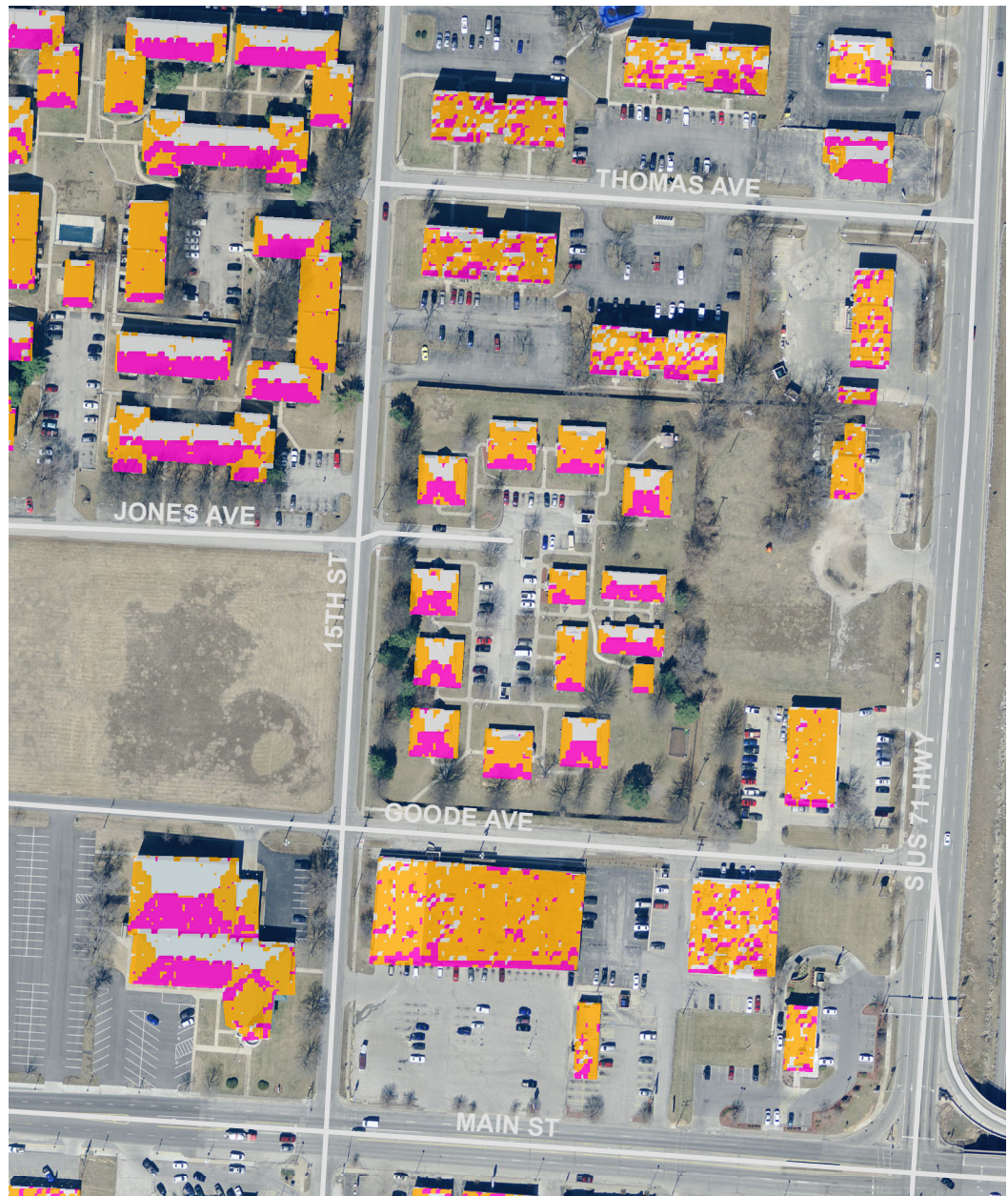
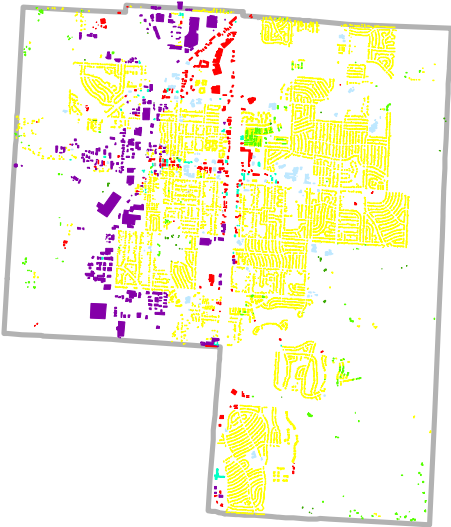


Grandview, MO Solar Potential

| | Land Use | Available Roof Area | Potential Installed Capacity | Potential Electricity Cost Savings |
|--|-----------------------|---------------------|------------------------------|------------------------------------|
| | Agriculture or Vacant | 416,311 sq ft | 2,706 kW | \$338,895 |
| | Commercial | 1,676,365 sq ft | 10,896 kW | \$1,364,632 |
| | Industrial | 5,090,838 sq ft | 33,090 kW | \$4,144,160 |
| | Office | 267,566 sq ft | 1,739 kW | \$217,810 |
| | Park, Open Space | 45,227 sq ft | 294 kW | \$36,816 |
| | Public/Semipublic | 958,545 sq ft | 6,231 kW | \$780,297 |
| | Residential | 10,953,462 sq ft | 71,198 kW | \$8,916,586 |
| | Unclassified | 24,507 sq ft | 159 kW | \$19,950 |



- North
- East/West
- South