

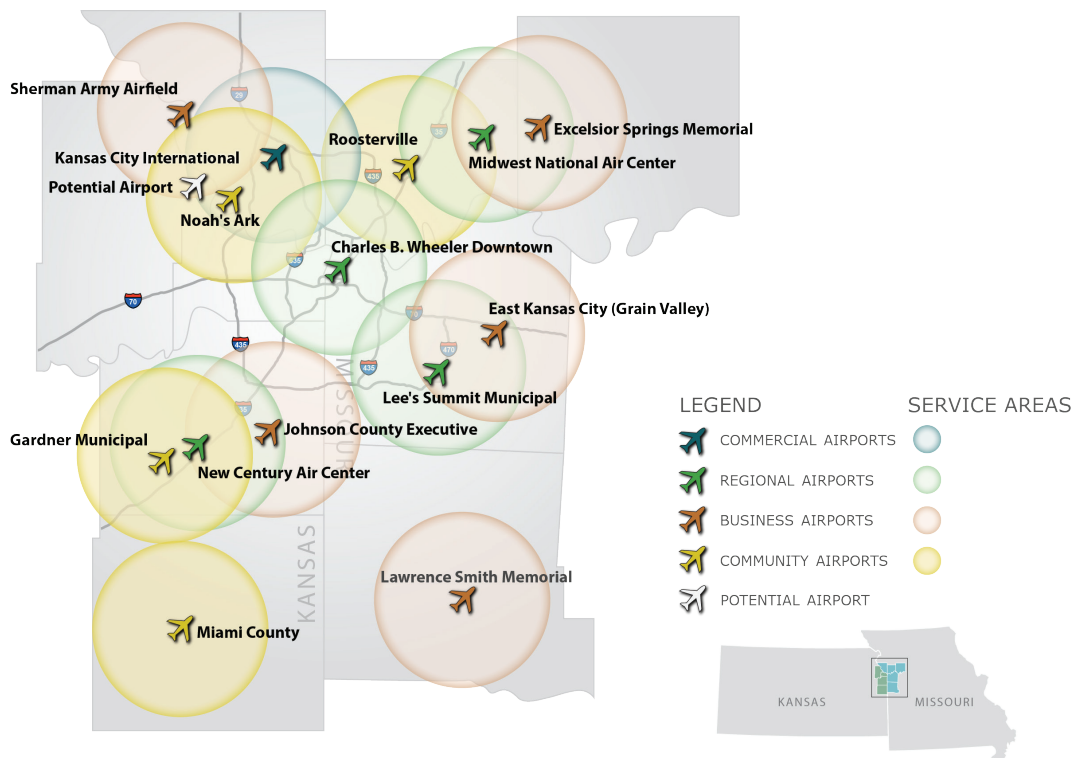


The Mid-America Regional Council (MARC) is a nonprofit association of city and county governments and the federally designated metropolitan planning organization for the bistate Kansas City region. One of MARC's main roles is to provide transportation planning services for the following counties — Johnson, Leavenworth, Miami and Wyandotte in Kansas; and Cass, Clay, Jackson and Platte in Missouri. MARC works with state departments of transportation, transit agencies, local governments, the private sector, aviation interests, and the region's residents to plan coordinated transportation systems that move people and goods affordably, efficiently and safely.

The Greater Kansas City Regional Aviation System Plan, conducted

by MARC, examined the current performance for 13 general aviation airports in a nine-county area served by MARC. Having adequate ground access to the region's airport system is important. Airports included in the system plan support business, medical, safety, and recreational needs. Airports included in the system plan are shown on the accompanying map, along with a ten mile radius "service area" for each airport. In reality, airports in the region draw their customers from varying distances, but the 10-mile areas help to demonstrate which areas of the system plan study area are in proximity to one or more of the general aviation airports. Generally, the areas of region with the highest concentrations of employment and population are well served by the current airport system.

TEN-MILE RADIUS FOR STUDY AIRPORTS



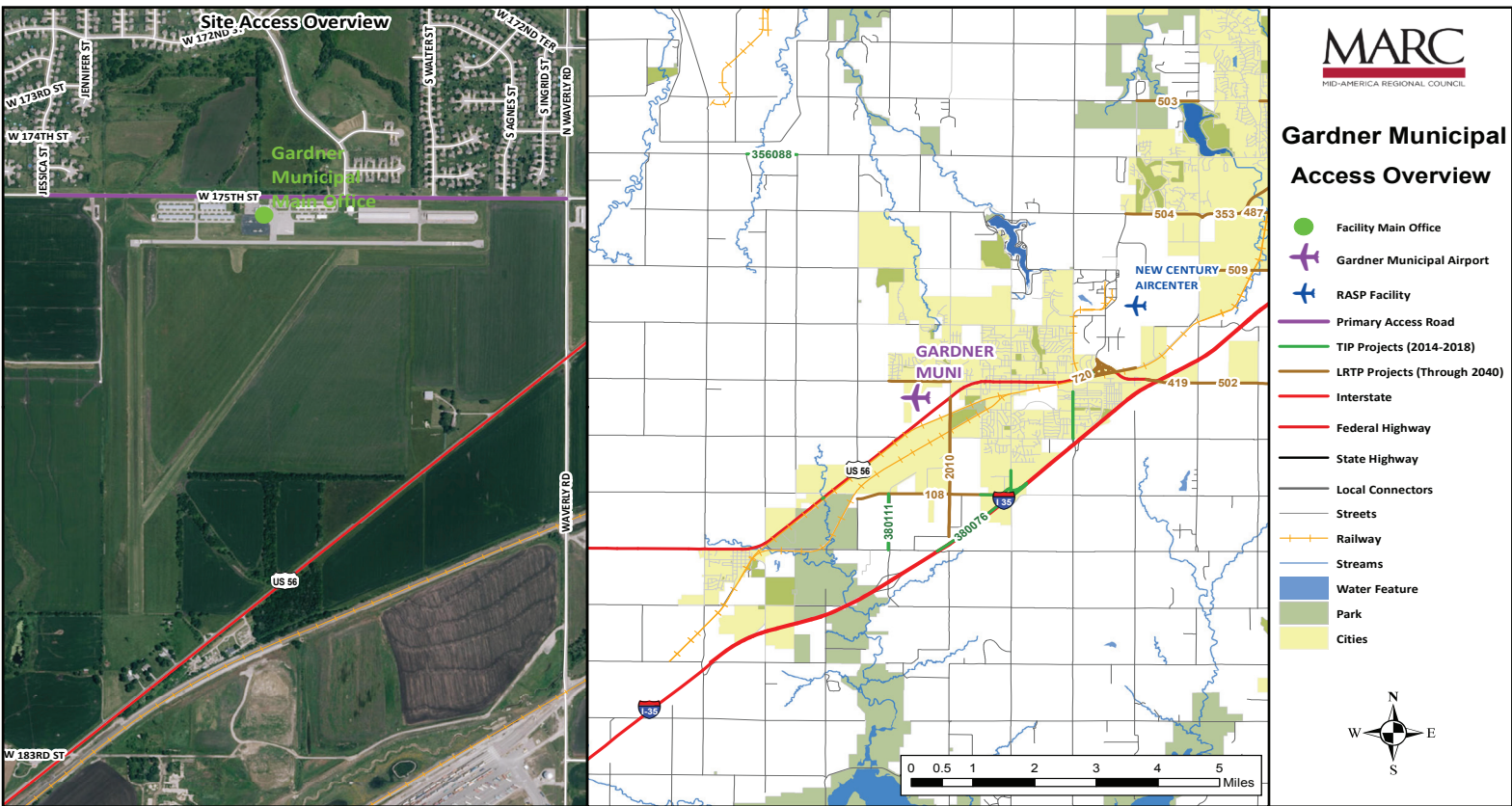
GARDNER MUNICIPAL AIRPORT

GROUND ACCESS PLAN

PLANNED GROUND ACCESS IMPROVEMENTS

The accompanying maps show the service area, immediate ground access routes and transportation improvement projects included in MARC's Transportation Improvement Program (TIP) and its Long Range Transportation Plan (LRTP). Improvements listed in the table are included in MARC's TIP. For more detailed information on transportation improvements included in the LRTP, visit www.TO2040.org or contact MARC at 816.474.4240/Transportation@MARC.org.

TRANSPORTATION PROJECT #	PROJECT TYPE	ROAD
380076 TIP	Street & Highway	I-35. BNSF Gardner Intermodal Facility.
380111 TIP	Street & Highway	Homestead Lane from 199th St. North to 191st St.



GARDNER MUNICIPAL AIRPORT ACCESS

Primary access to and from Gardner Municipal Airport is summarized in the following table. According to airport reporting, current signage to the airport is adequate. The airport's on-airport access road is owned by the City of Gardner, and the airport rates the current condition of this road as excellent.

ACCESS ROAD	DRIVING DIRECTIONS
North via I-35 S	<ul style="list-style-type: none"> From I-35 S, follow I-35 S and US-56 W to W Santa Fe St in Gardner (7.4 mi) Follow W Santa Fe St and W 175th St to Airport entrance on the left (1 mi)
East via I-35 S/US-56 W	<ul style="list-style-type: none"> From I-35 S, take exit 210 for US-56 W (0.4 mi) Turn right onto US-56 W/W 175th St and follow US-56 W (2.8 mi) Take a slight right onto W Santa Fe St (0.5 mi) Continue onto W 175th St (0.5 mi) Airport entrance is to the left (131 ft)
South via I-35N	<ul style="list-style-type: none"> From I-35 N, take exit 207 for Gardner Rd Turn left onto Gardner Rd (0.9 mi) Continue onto S Center St (1.3 mi) Turn left onto W Main St (0.5 mi) Slight right onto W Santa Fe St (0.5 mi) Continue onto W 175th St (0.5 mi) Airport entrance is to the left (131 ft)
West via US-56 E	<ul style="list-style-type: none"> From US-56 E, turn left onto Four Corners Rd Turn right onto W 175th St (1 mi) Take 2nd right for Airport entrance (131 ft)

GARDNER MUNICIPAL AIRPORT GROUND TRANSPORTATION SERVICES

Once a visitor or even sometimes a resident reaches Gardner Municipal Airport, the airport is not the traveler's final destination in the Kansas City region. As a result, it is often useful for general aviation airports to have ground transportation services. Current ground transportation services for Gardner Municipal Airport are shown in the accompanying table. Based on system plan recommendations, the Gardner Municipal Airport meets the on-site ground access service level to best serve the needs of its customers and to fulfill its role in the regional airport system.

ON-SITE GROUND ACCESS SERVICE	CURRENTLY AVAILABLE
Rental Car	No
Courtesy Car	No
Taxi	Yes
Limo	No
Airport Shuttle Service	No
Public Transit	No



Mid-America Regional Council
600 Broadway, Suite 200
Kansas City, Missouri 64105-1659

phone: 816-474-4240
email: transportation@marc.org
www.MARC.org