

LAWRENCE SMITH MEMORIAL AIRPORT GROUND ACCESS PLAN

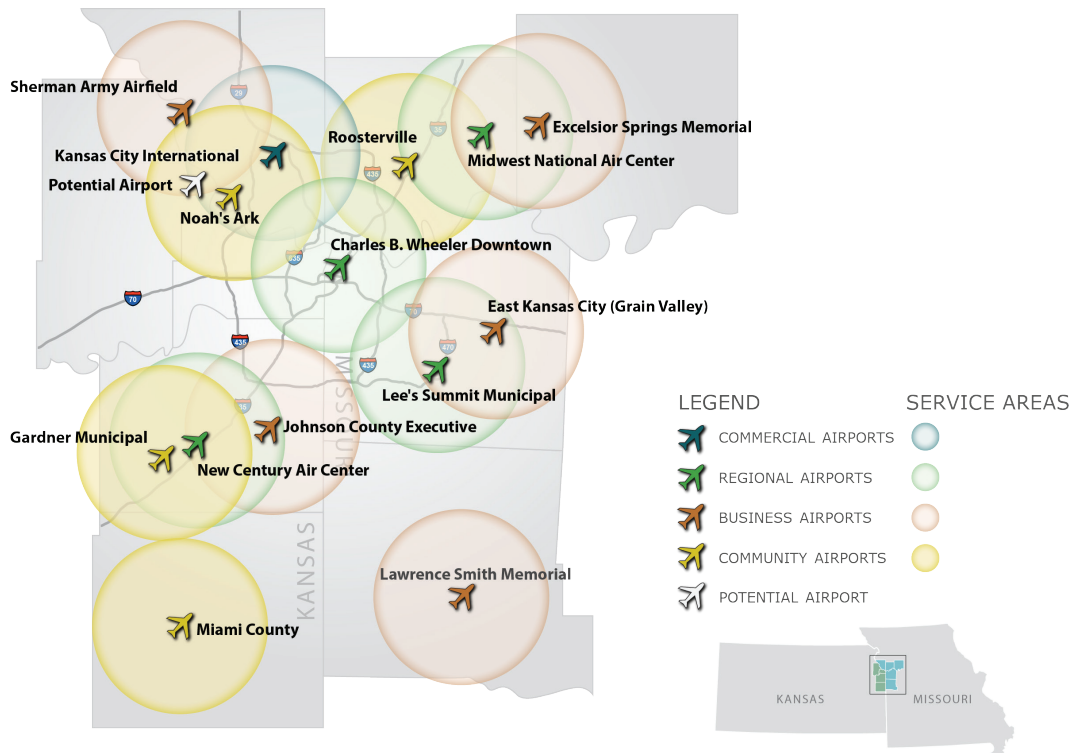


The Mid-America Regional Council (MARC) is a nonprofit association of city and county governments and the federally designated metropolitan planning organization for the bistate Kansas City region. One of MARC's main roles is to provide transportation planning services for the following counties—Johnson, Leavenworth, Miami and Wyandotte in Kansas; and Cass, Clay, Jackson and Platte in Missouri. MARC works with state departments of transportation, transit agencies, local governments, the private sector, aviation interests, and the region's residents to plan coordinated transportation systems that move people and goods affordably, efficiently and safely.

The Greater Kansas City Regional Aviation System Plan, conducted by

MARC, examined the current performance for 13 general aviation airports in a nine-county area served by MARC. Having adequate ground access to the region's airport system is important. Airports included in the system plan support business, medical, safety, and recreational needs and are shown on the accompanying map, along with a ten mile radius "service area" for each airport. In reality, airports in the region draw their customers from varying distances, but the 10-mile areas help to demonstrate which areas of the system plan study area are in proximity to one or more of the general aviation airports. Generally, the areas of region with the highest concentrations of employment and population are well served by the current airport system.

TEN-MILE RADIUS FOR STUDY AIRPORTS



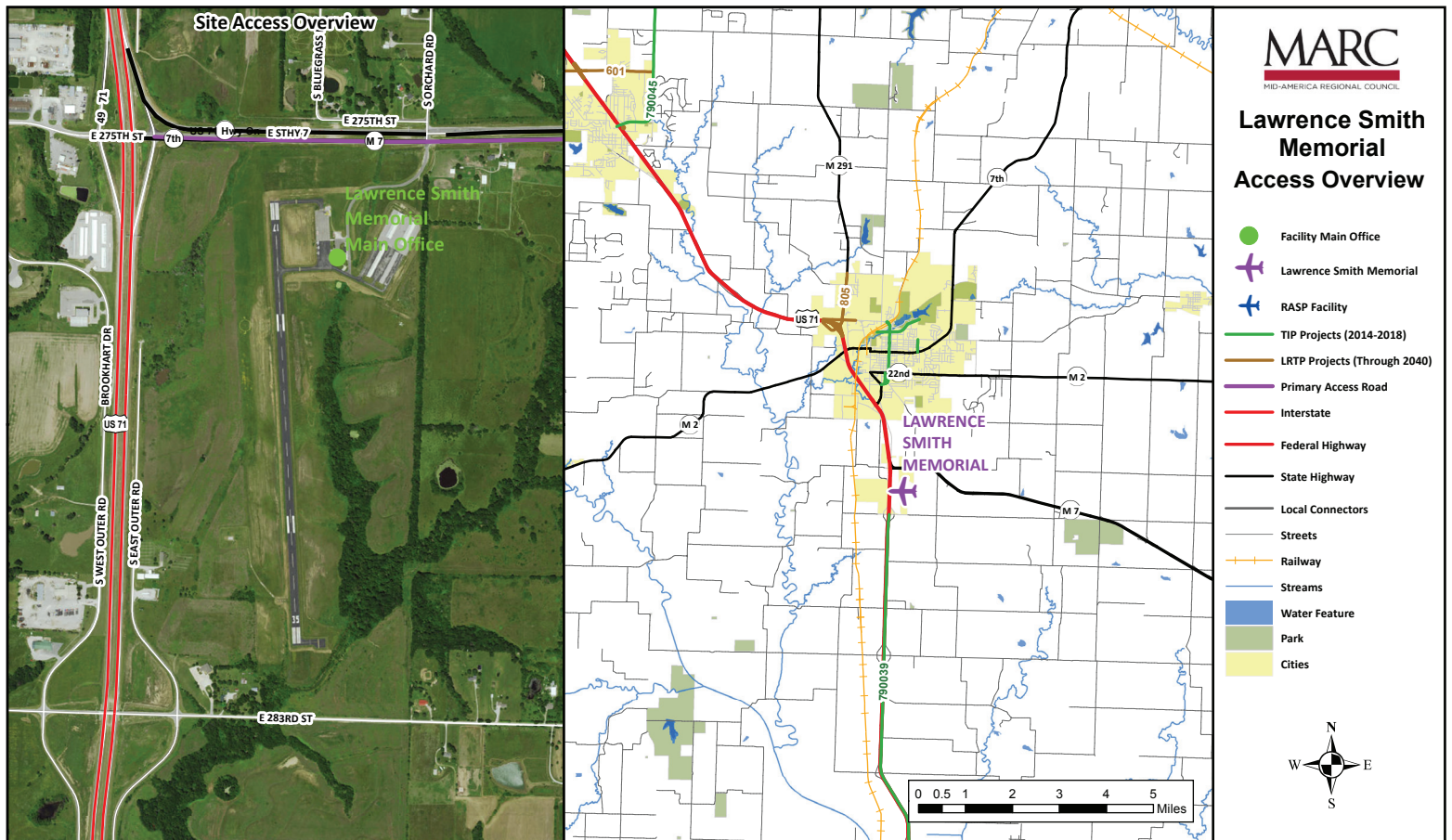
LAWRENCE SMITH MEMORIAL AIRPORT

GROUND ACCESS PLAN

PLANNED GROUND ACCESS IMPROVEMENTS

The accompanying maps show the service area, immediate ground access routes, and transportation improvement projects included in MARC's Transportation Improvement Program (TIP) and its Long Range Transportation Plan (LRTP). Improvements listed in the table are included in MARC's TIP. For more detailed information on transportation improvements included in the LRTP, visit www.TO2040.org or contact MARC at 816.474.4240/Transportation@MARC.org.

TRANSPORTATION PROJECT #	PROJECT TYPE	ROAD
790039 TIP	Street & Highway	US 71; North of 283rd St. to Bates County line
790045 TIP	Street & Highway; Pavement improvements	Rte. J; M-58 to US-71



LAWRENCE SMITH MEMORIAL AIRPORT ACCESS

Primary access to and from Lawrence Smith Memorial Airport is summarized in the table. According to airport reporting, current signage to the airport is adequate. The airport's on-airport access road is owned by Lawrence Smith Memorial Airport, and the airport rates the current condition of this road as good.

ACCESS ROAD	DRIVING DIRECTIONS
North via I-49 S	<ul style="list-style-type: none"> • From I-49 S, Take exit 157 for MO-7 S toward Clinton (0.2 mi) • Use any lane to turn left onto MO-7 S/E 275th St (0.6 mi) • Turn right onto S Orchard Rd (184 ft)
East via MO-7 N	<ul style="list-style-type: none"> • From MO-7 N, Turn left onto S Orchard Rd (269 ft)
South via I-49 N	<ul style="list-style-type: none"> • From I-49 N, Take exit 157 for MO-7 S toward Clinton (0.2 mi) • Turn right onto MO-7 S/E 275th St (0.5 mi) • Turn right onto S Orchard Rd (184 ft)
West via	<ul style="list-style-type: none"> • N/A

LAWRENCE SMITH MEMORIAL AIRPORT GROUND TRANSPORTATION SERVICES

Once a visitor or even sometimes a resident reaches Lawrence Smith Memorial Airport, the airport is not the traveler's final destination in the Kansas City region. As a result, it is often useful for general aviation airports to have ground transportation services. Current ground transportation services for Lawrence Smith Memorial Airport are shown in the accompanying table. Lawrence Smith Memorial Airport has existing on-site ground transportation services that are adequate to meet the needs of its customers and to fulfill its designated role in the Regional Aviation System Plan.

ON-SITE GROUND ACCESS SERVICE	CURRENTLY AVAILABLE
Rental Car	Yes
Courtesy Car	Yes
Taxi	Yes
Limo	No
Airport Shuttle Service	No
Public Transit	No



Mid-America Regional Council
600 Broadway, Suite 200
Kansas City, Missouri 64105-1659

phone: 816-474-4240
email: transportation@marc.org
www.MARC.org