

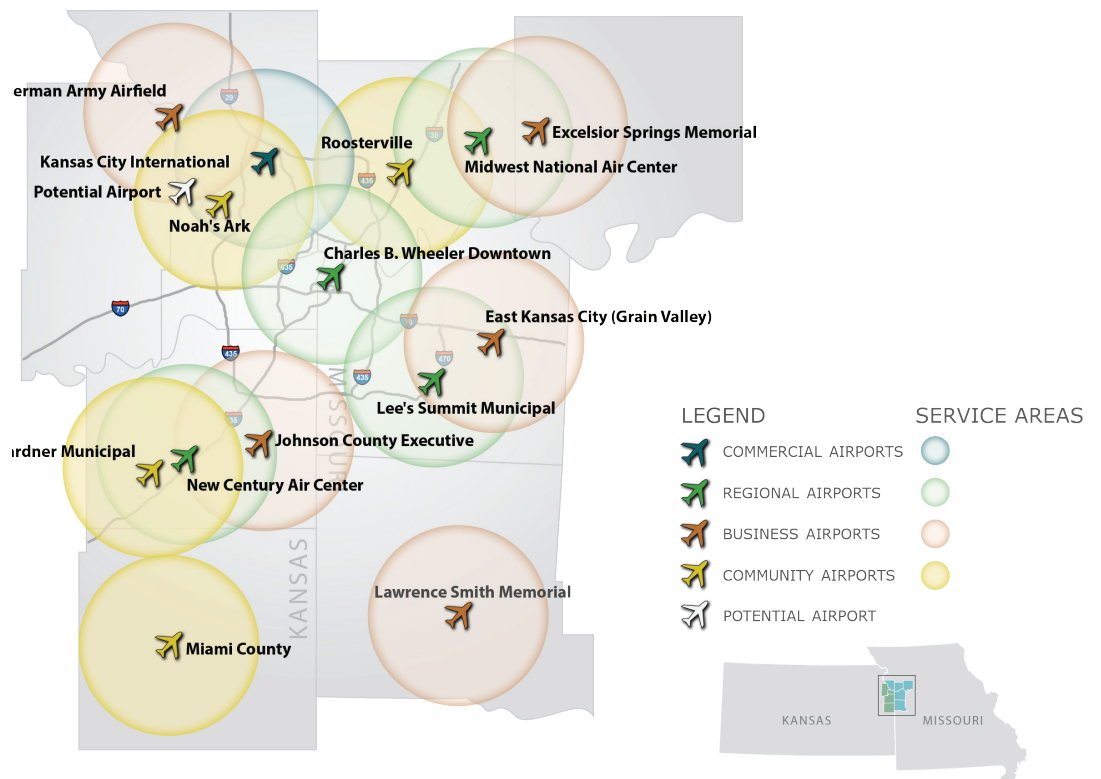


The Mid-America Regional Council (MARC) is a nonprofit association of city and county governments and the federally designated metropolitan planning organization for the bistate Kansas City region. One of MARC's main roles is to provide transportation planning services for the following counties — Johnson, Leavenworth, Miami and Wyandotte in Kansas; and Cass, Clay, Jackson and Platte in Missouri. MARC works with state departments of transportation, transit agencies, local governments, the private sector, aviation interests, and the region's residents to plan coordinated transportation systems that move people and goods affordably, efficiently and safely.

The Greater Kansas City Regional Aviation System Plan, conducted by

MARC, examined the current performance for 13 general aviation airports in a nine-county area served by MARC. Having adequate ground access to the region's airport system is important. Airports included in the system plan support business, medical, safety, and recreational needs. Airports included in the system plan are shown on the accompanying map, along with a ten mile radius "service area" for each airport. In reality, airports in the region draw their customers from varying distances, but the 10-mile areas help to demonstrate which areas of the system plan study area are in proximity to one or more of the general aviation airports. Generally, the areas of region with the highest concentrations of employment and population are well served by the current airport system.

## TEN-MILE RADIUS FOR STUDY AIRPORTS



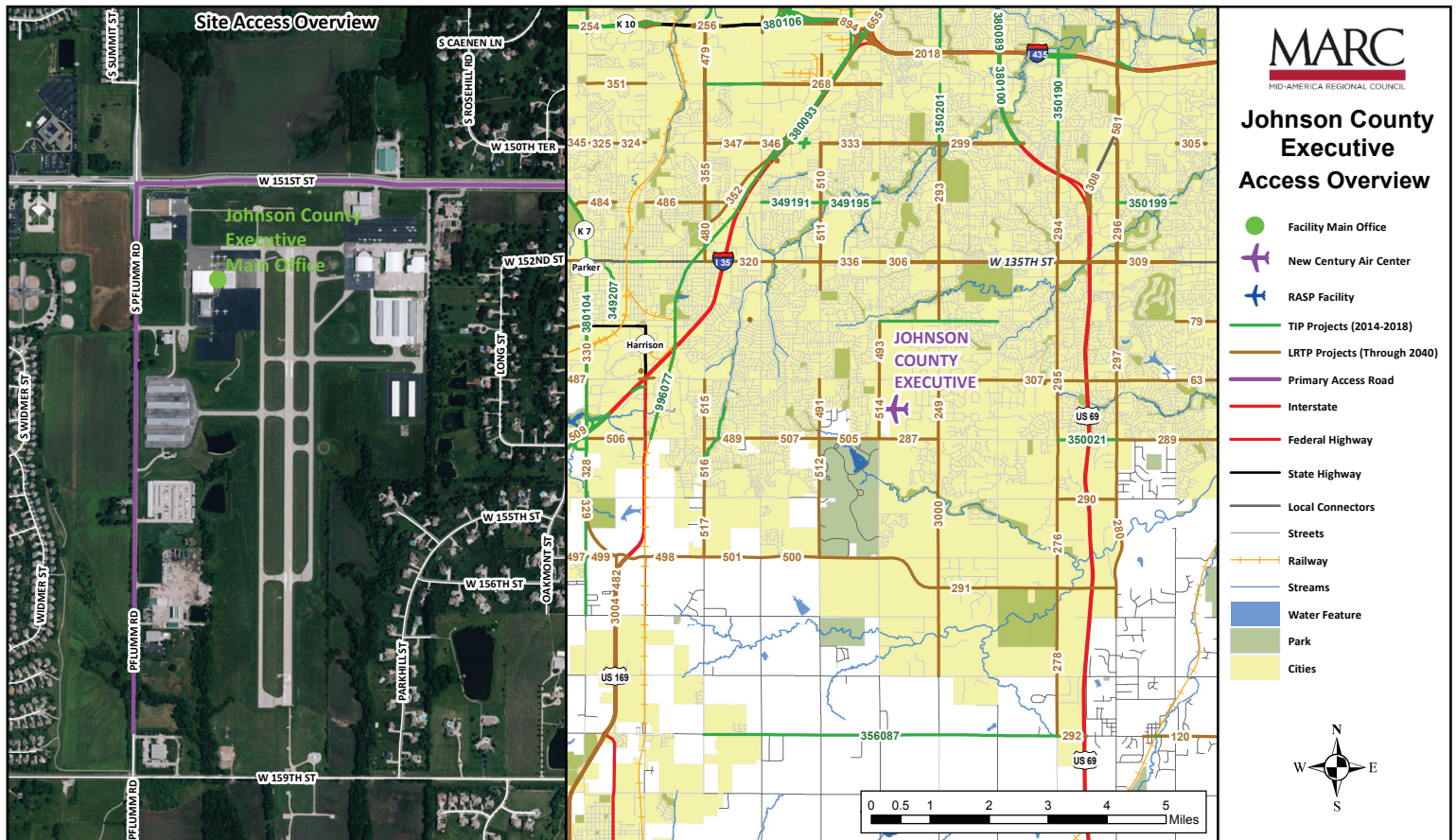
# JOHNSON COUNTY EXECUTIVE AIRPORT

## GROUND ACCESS PLAN

### PLANNED GROUND ACCESS IMPROVEMENTS

The accompanying maps show the service area, immediate ground access routes and transportation improvement projects included in MARC's Transportation Improvement Program (TIP) and its Long Range Transportation Plan (LRTP). Improvements listed in the table below are included in MARC's TIP. For more detailed information on transportation improvements included in the LRTP, visit [www.TO2040.org](http://www.TO2040.org) or contact MARC at 816.474.4240/Transportation@MARC.org.

TRANSPORTATION PROJECT #	PROJECT TYPE	ROAD
349191 TIP	Street & Highway	127th St; Mur-Len to Blackbob
349195 TIP	Street & Highway	127th St; Blackbob to Pflumm
349207 TIP	Bicycle & Pedestrian	Westview Trail; Park St to Dennis Ave
350021 TIP	Street & Highway	159th St; Antioch to Metcalf
350190 TIP	Street & Highway	Antioch Rd; I-435 to 119th St
350199 TIP	Street & Highway	127th St; Metcalf to Nall
350201 TIP	Street & Highway	Quivira Rd; College Blvd to 119th St
356087 TIP	Street & Highway	199th St; Ridgeview to Antioch
380089 TIP	Management & Operations	US-69; From I-435 to I-35 in Overland Park
380093 TIP	Street & Highway	Corridor; From 119th St. N to I-35 and I-35N to 75th St
380100 TIP	Street & Highway	Corridor; 119th St. N to I-35 and I-35 N to 75th St; .5 Km N of 95th St N to I-35 and I-35 N to 75th St
380104 TIP	Street & Highway	K-7; .5 mile South 183rd, N to .5 mile north 119th St
380106 TIP	Street & Highway	Interchange at I-435/K-10 City of Lenexa



## JOHNSON COUNTY EXECUTIVE AIRPORT ACCESS

Primary access to and from Johnson County Executive Airport is summarized in the table. According to airport reporting, current signage to the airport is adequate. The airport's on-airport access road is owned by Johnson County Executive Airport, and the airport rates the current condition of this road as good.

ACCESS ROAD	DRIVING DIRECTIONS
North via I-35 S	<ul style="list-style-type: none"> <li>• From I-35 S, keep right at the fork to continue on US-69 S/Overland Pkwy (2.7 mi)</li> <li>• Keep left to continue on US-69 S (6.8 mi)</li> <li>• Take the 151st St exit (0.2 mi)</li> <li>• Use the right 2 lanes to turn right onto W 151st St (3 mi)</li> <li>• Turn left onto S Pflumm Rd (0.2 mi)</li> <li>• Make a left turn onto Airport entrance road</li> </ul>
East via MO-150 W	<ul style="list-style-type: none"> <li>• From MO-150 W, turn left onto Wyandotte St (Kansas) (0.4 mi)</li> <li>• Continue onto W 143rd St (0.2 mi)</li> <li>• Turn left onto Kenneth Rd (1 mi)</li> <li>• Turn right onto W 151st St (6.5 mi)</li> <li>• Turn left onto S Pflumm Rd (0.2 mi)</li> <li>• Make a left turn onto Airport entrance road</li> </ul>
South via US-69 N	<ul style="list-style-type: none"> <li>• From US-69 N, take the 151st Street exit (0.1 mi)</li> <li>• Turn left onto W 151st St and follow signs for Airport (3.1 mi)</li> <li>• Make a left turn onto Airport entrance road</li> <li>• Turn left onto S Pflumm Rd (0.2 mi)</li> <li>• Make a left turn onto Airport entrance road</li> </ul>
West via I-35 N	<ul style="list-style-type: none"> <li>• From I-35 N, take exit 215 for US-169 S/KS-7 toward Paola (0.3 mi)</li> <li>• Use the middle lane to take the exit toward W 151st St (0.2 mi)</li> <li>• Turn right onto W 151st St and follow signs for Airport (4.3 mi)</li> <li>• Turn right onto S Pflumm Rd (0.2 mi)</li> <li>• Make a left turn onto Airport entrance road</li> </ul>

## JOHNSON COUNTY EXECUTIVE AIRPORT GROUND TRANSPORTATION SERVICES

Once a visitor or even sometimes a resident reaches Johnson County Executive Airport, the airport is not the traveler's final destination in the Kansas City region. As a result, it is often useful for general aviation airports to have ground transportation services. Current ground transportation services for Johnson County Executive Airport are shown in the accompanying table. Johnson County Executive Airport has existing on-site ground transportation services that are adequate to meet the needs of its customers and to fulfill its designated role in the Regional Aviation System Plan.

ON-SITE GROUND ACCESS SERVICE	CURRENTLY AVAILABLE
Rental Car	No
Courtesy Car	No
Taxi	Yes
Limo	Yes
Airport Shuttle Service	No
Public Transit	Yes - Johnson County Transit



Mid-America Regional Council  
600 Broadway, Suite 200  
Kansas City, Missouri 64105-1659

phone: 816-474-4240  
email: [transportation@marc.org](mailto:transportation@marc.org)  
[www.MARC.org](http://www.MARC.org)