

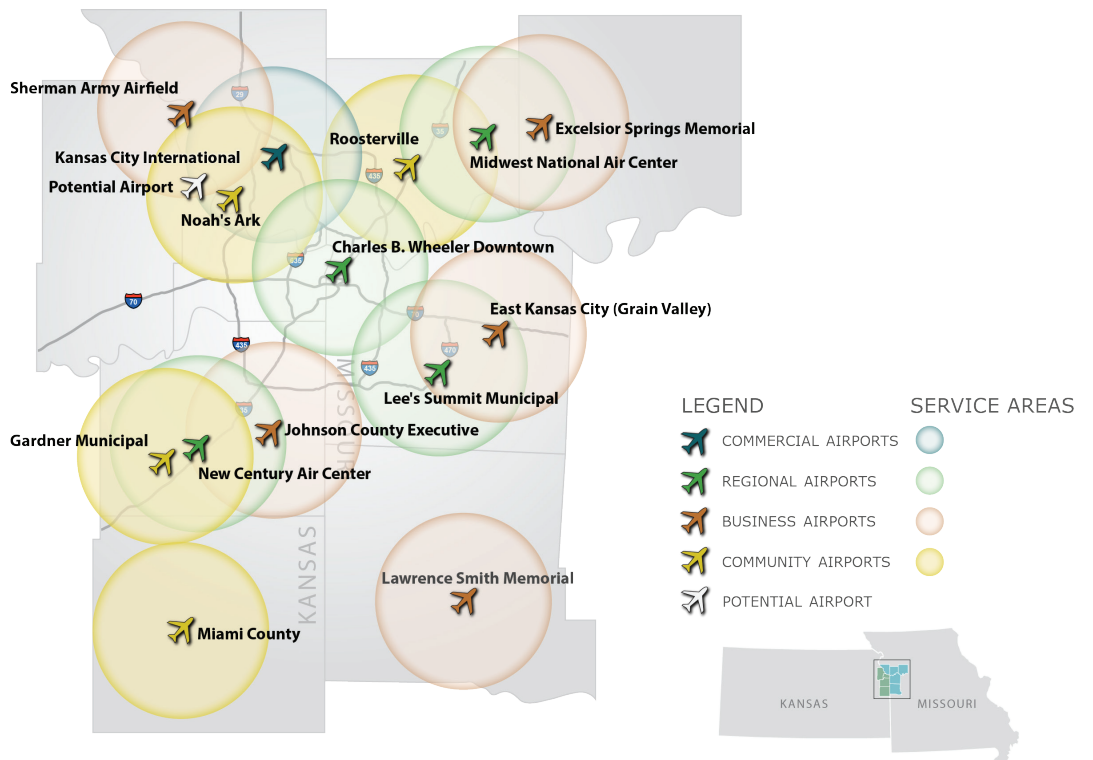


The Mid-America Regional Council (MARC) is a nonprofit association of city and county governments and the federally designated metropolitan planning organization for the bistate Kansas City region. One of MARC's main roles is to provide transportation planning services for the following counties — Johnson, Leavenworth, Miami and Wyandotte in Kansas; and Cass, Clay, Jackson and Platte in Missouri. MARC works with state departments of transportation, transit agencies, local governments, the private sector, aviation interests, and the region's residents to plan coordinated transportation systems that move people and goods affordably, efficiently and safely.

The Greater Kansas City Regional Aviation System Plan, conducted

by MARC, examined the current performance for 13 general aviation airports in a nine-county area served by MARC. Having adequate ground access to the region's airport system is important. Airports included in the system plan support business, medical, safety, and recreational needs. Airports included in the system plan are shown on the accompanying map, along with a ten mile radius "service area" for each airport. In reality, airports in the region draw their customers from varying distances, but the 10-mile areas help to demonstrate which areas of the system plan study area are in proximity to one or more of the general aviation airports. Generally, the areas of region with the highest concentrations of employment and population are well served by the current airport system.

### TEN-MILE RADIUS FOR STUDY AIRPORTS



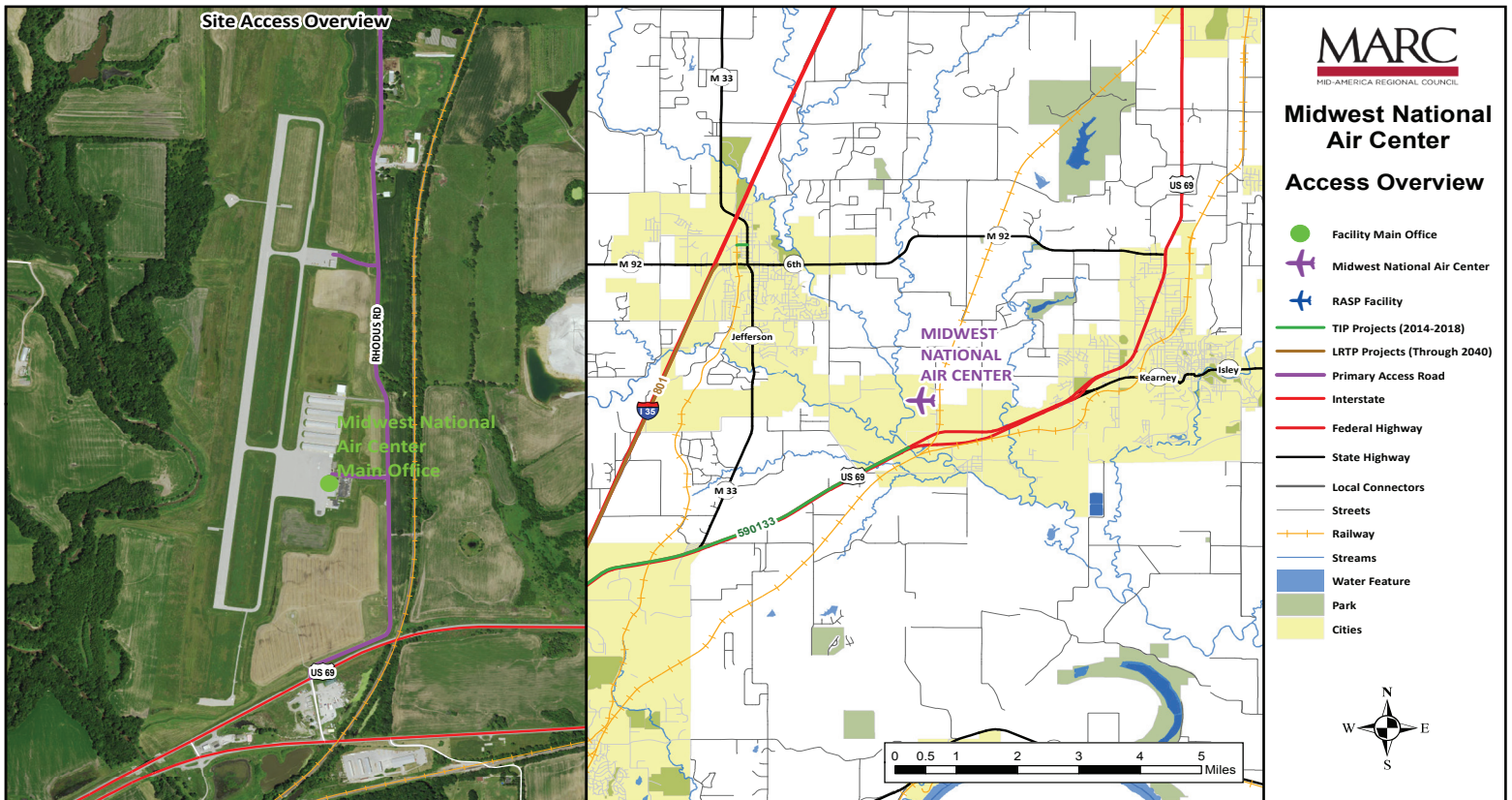
# MIDWEST NATIONAL AIR CENTER

## GROUND ACCESS PLAN

### PLANNED GROUND ACCESS IMPROVEMENTS

The accompanying maps show the service area, immediate ground access routes, and transportation improvement projects included in MARC's Transportation Improvement Plan (TIP) and its Long Range Transportation Program (LRTP). Improvements listed in the table are included in MARC's TIP. For more detailed information on transportation improvements included in the LRTP, visit [www.TO2040.org](http://www.TO2040.org) or contact MARC at 816.474.4240/Transportation@MARC.org.

TRANSPORTATION PROJECT #	PROJECT TYPE	ROAD
590133 TIP	Street & Highway	US 69; I-35 to Fishing River



## MIDWEST NATIONAL AIR CENTER ACCESS

Primary access to and from Midwest National Air Center is summarized in the table. According to airport reporting, current signage to the airport is inadequate and is in need of improvement. The airport's on-airport access road is owned by Midwest National Air Center, and the airport rates the current condition of this road as fair. It is recommended that the airport entrance road be improved to a condition of good or excellent.

ACCESS ROAD	DRIVING DIRECTIONS
North via	<ul style="list-style-type: none"> <li>• N/A</li> </ul>
East via US-69 S	<ul style="list-style-type: none"> <li>• From US-69 S, turn right onto Rhodus Rd (0.5 mi)</li> <li>• Turn left onto Davidson Rd (0.1 mi)</li> </ul>
South via I-35 N and US-69 N	<ul style="list-style-type: none"> <li>• From I-35 N, take exit 20 for US-69 N/MO-33 N (0.3 mi)</li> <li>• Continue onto MO-33 N/US-69 N (6.6 mi)</li> <li>• Turn left onto Rhodus Rd (0.6 mi)</li> <li>• Turn left onto Davidson Rd (0.1 mi)</li> </ul>
West via	<ul style="list-style-type: none"> <li>• N/A</li> </ul>

## MIDWEST NATIONAL AIR CENTER GROUND TRANSPORTATION SERVICES

Once a visitor or even sometimes a resident reaches Midwest National Air Center, the airport is not the traveler's final destination in the Kansas City region. As a result, it is often useful for general aviation airports to have ground transportation services. Current ground transportation services for Midwest National Air Center are shown in the accompanying table. Midwest National Air Center has existing on-site ground transportation services that are adequate to meet the needs of its customers and to fulfill its designated role in the Regional Aviation System Plan.

ON-SITE GROUND ACCESS SERVICE	CURRENTLY AVAILABLE
Rental Car	No
Courtesy Car	Yes
Taxi	No
Limo	No
Airport Shuttle Service	No
Public Transit	No



Mid-America Regional Council  
600 Broadway, Suite 200  
Kansas City, Missouri 64105-1659

phone: 816-474-4240  
email: [transportation@marc.org](mailto:transportation@marc.org)  
[www.MARC.org](http://www.MARC.org)