

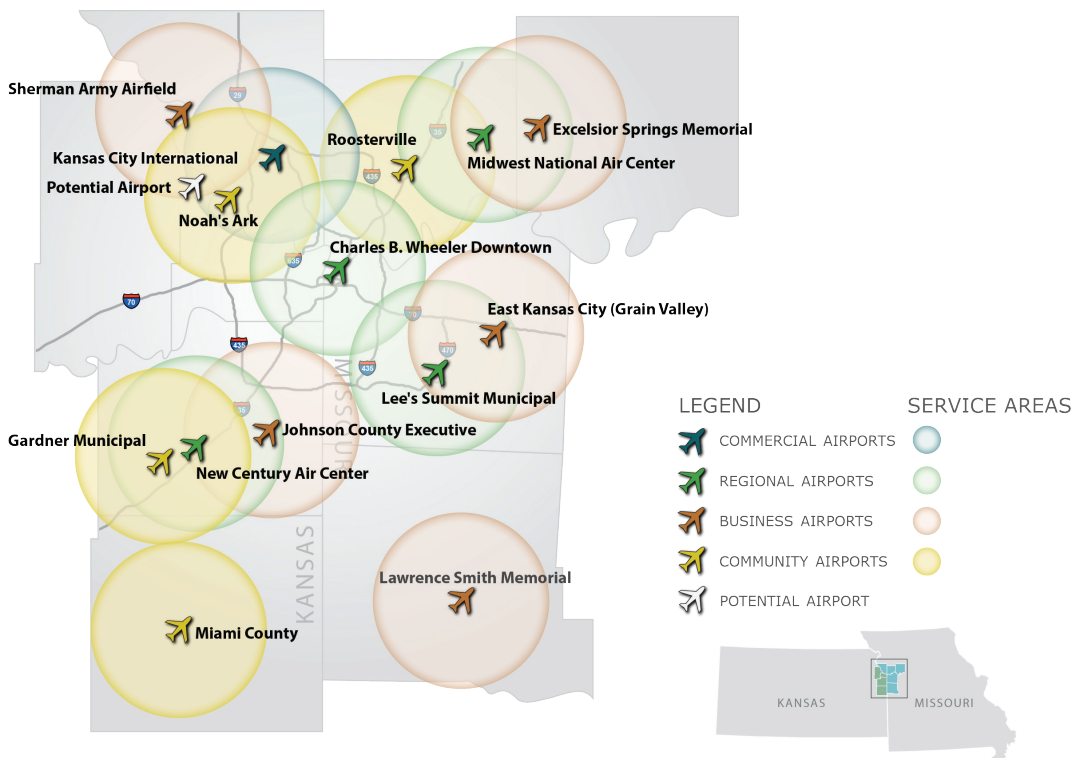


The Mid-America Council (MARC) is a nonprofit association of city and county governments and the federally designated metropolitan planning organization for the bistate Kansas City region. One of MARC's main roles is to provide transportation planning services for the following counties – Johnson, Leavenworth, Miami and Wyandotte in Kansas; and Cass, Clay, Jackson and Platte in Missouri. MARC works with state departments of transportation, transit agencies, local governments, the private sector, aviation interests, and the region's residents to plan coordinated transportation systems that move people and goods affordably, efficiently and safely.

The Greater Kansas City Aviation System Plan, conducted by MARC,

examined the current performance for 13 general aviation airports in a nine-county area served by MARC. Having adequate ground access to the region's airport system is important. Airports included in the system plan support business, medical, safety, and recreational needs and are shown on the accompanying map, along with a ten mile radius "service area" for each airport. In reality, airports in the region draw their customers from varying distances, but the 10-mile areas help to demonstrate which areas of the system plan study area are in proximity to one or more of the general aviation airports. Generally, the areas of region with the highest concentrations of employment and population are well served by the current airport system.

### TEN-MILE RADIUS FOR STUDY AIRPORTS



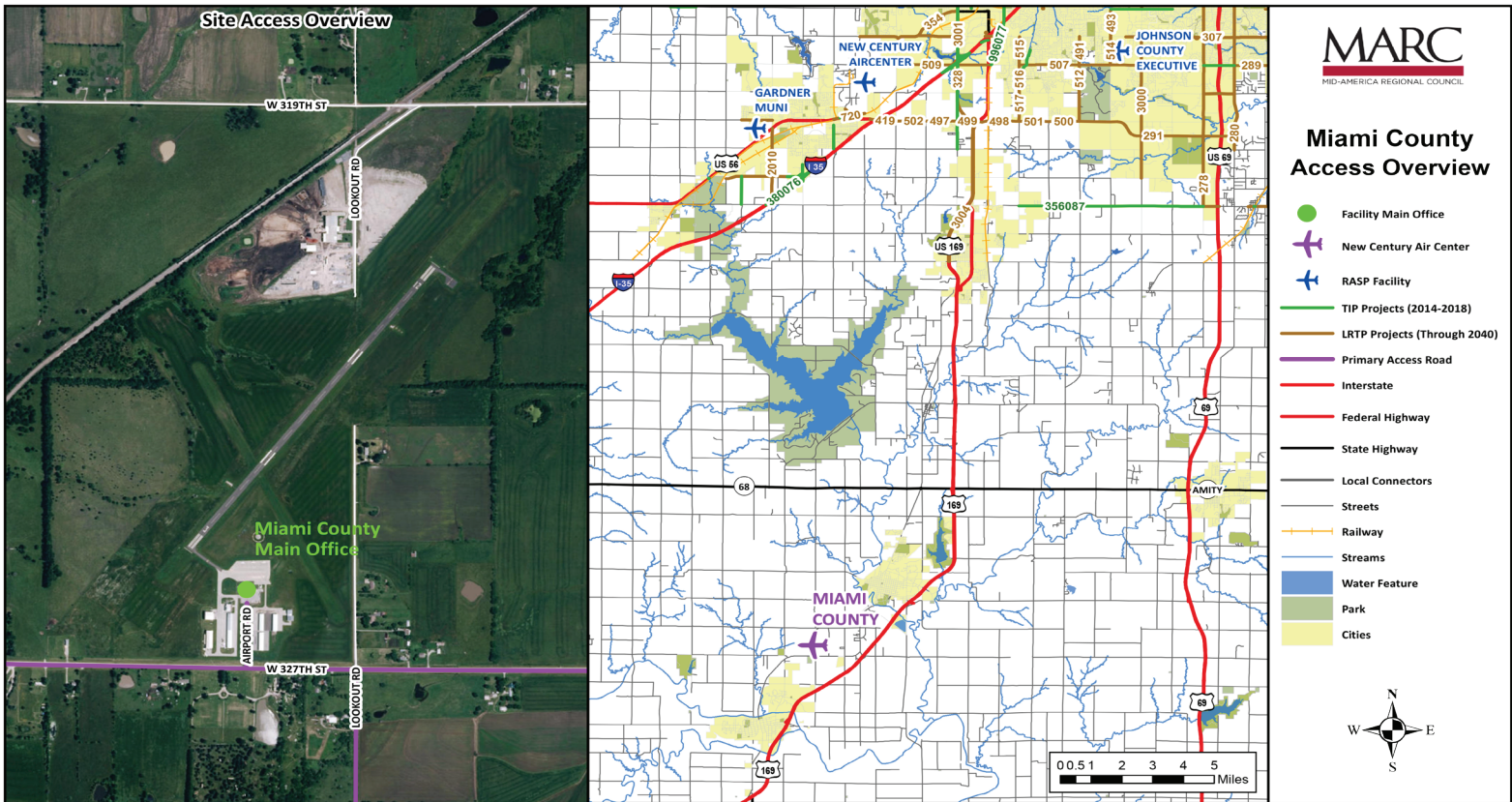
# MIAMI COUNTY AIRPORT

## GROUND ACCESS PLAN

### PLANNED GROUND ACCESS IMPROVEMENTS

The accompanying maps show the service area, immediate ground access routes, and transportation improvement projects included in MARC's Transportation Improvement Program (TIP) and its Long Range Transportation Plan (LRTP). Improvements listed in the table are included in MARC's TIP. For more detailed information on transportation improvements included in the LRTP, visit [www.TO2040.org](http://www.TO2040.org) or contact MARC at 816.474.4240/Transportation@MARC.org.

TRANSPORTATION PROJECT #	PROJECT TYPE	ROAD
356087 TIP	Street & Highway	199th St. Ridgeview to Antioch
380076 TIP	Street & Highway	I-35
996077 TIP	Transit; Alternatives Analysis Study.	I-35



## MIAMI COUNTY AIRPORT ACCESS

Primary access to and from Miami County Airport is summarized in the table. According to airport reporting, current signage to the airport is adequate. The airport's on-airport access road is owned by Miami County Airport, and the airport rates the current condition of this road as excellent.

ACCESS ROAD	DRIVING DIRECTIONS
North via US-169 S	<ul style="list-style-type: none"> <li>• From US-169 S, take the Old KC Road exit toward 327th Street</li> <li>• Turn right onto Old Kansas City Rd (0.1 mi)</li> <li>• Turn left onto W 327th St/Old Kansas City Rd (1.7 mi)</li> <li>• Turn right onto Airport Rd (0.1 mi)</li> </ul>
East via	<ul style="list-style-type: none"> <li>• N/A</li> </ul>
South via US-169 N	<ul style="list-style-type: none"> <li>• From US-169 N, take the 343rd St/KS-279 exit</li> <li>• Turn left onto KS-279 W/343rd St and continue to follow KS-279 W (0.5 mi)</li> <li>• Turn right onto Osawatomie Rd (1.3 mi)</li> <li>• Turn right onto Old KC Rd (0.2 mi)</li> <li>• Continue onto W 327th St (0.6 mi)</li> <li>• Turn left onto Airport Rd (0.1 mi)</li> </ul>
West via	<ul style="list-style-type: none"> <li>• N/A</li> </ul>

## MIAMI COUNTY AIRPORT GROUND TRANSPORTATION SERVICES

Once a visitor or even sometimes a resident reaches Miami County Airport, the airport is not the traveler's final destination in the Kansas City region. As a result, it is often useful for general aviation airports to have ground transportation services. Current ground transportation services for Miami County Airport are shown in the accompanying table. Miami County Airport has existing on-site ground transportation services that are adequate to meet the needs of its customers and to fulfill its designated role in the Aviation System Plan.

ON-SITE GROUND ACCESS SERVICE	CURRENTLY AVAILABLE
Rental Car	No
Courtesy Car	No
Taxi	Yes
Limo	No
Airport Shuttle Service	No
Public Transit	No



Mid-America Council  
600 Broadway, Suite 200  
Kansas City, Missouri 64105-1659

phone: 816-474-4240  
email: [transportation@marc.org](mailto:transportation@marc.org)  
[www.MARC.org](http://www.MARC.org)